

# SAIL COUNTRY

A L B U R Y W O D O N G A

**3-4 November  
2018**

Incorporating the:

2018 Victorian Dinghy Championships

2018 Victorian International Fireball Championships

2018 Victorian Laser Inland Championships

[www.sailcountry.com](http://www.sailcountry.com)

**Because everyone deserves a weekend in the country!**



## Welcome to Sail Country from our Commodore

I would like to welcome you to the Albury Wodonga Yacht Club. Many of you may be return visitors to our “Little Club in the Country” and we thank you for again making the trip. For those of you who are here for the first time, I hope you enjoy your stay and take every opportunity to make the most of our relaxed country setting.

Dating from our foundation in 1958 we have a proud history of hosting regattas that don't just offer quality racing, but a unique freshwater experience on one of the largest inland waterways in Australia. Sail Country is not just about the racing, but enjoying our country hospitality and finding time to socialize with fellow sailors.

Please make use of our grounds and facilities whilst visiting and if you are unsure of anything at all please don't hesitate to ask one of the Regatta Volunteers for assistance. Regatta Volunteers can be identified by their orange cap for on-shore matters and a green cap for on-water.

Please note our Club has a strict NO PET POLICY (guide and assistance dogs accepted). Please take this into account when planning your visit as you will be turned away if you arrive with a pet.

On behalf of the AWYC Committee and members I would like to wish you a happy and enjoyable weekend and every success if you are competing . We hope your experiences will leave you looking forward to your next chance to come back to Lake Hume and our Little Club in the Country.

Regards

Terry Kerr

AWYC Commodore 2018/19

## Albury Wodonga Yacht Club Contact Details

Club House Phone:	0459 533 583
Street Address:	Old Weir Road Lake Hume Bonegilla VIC 3691
Postal Address:	PO Box 640 Albury NSW 2640
AWYC Website:	<a href="http://www.awyc.yachting.org.au">www.awyc.yachting.org.au</a>
Event Coordinator:	Phil Clements
Phone:	0407 272 375
Email:	<a href="mailto:sail.country@awyc.org.au">sail.country@awyc.org.au</a>



[facebook.com/AlburyWodongaYC](https://facebook.com/AlburyWodongaYC)



[twitter.com/AlburyWodongaYC](https://twitter.com/AlburyWodongaYC)



[youtube.com/AlburyWodongaSailing](https://youtube.com/AlburyWodongaSailing)



[instagram.com/alburywodongayachtclub](https://instagram.com/alburywodongayachtclub)

# The Yardarm Cafe and Bar

During Sail Country our licensed Cafe will be open daily serving breakfast, lunch and dinner. Snacks and drink are available during the day and into the evening including beer, cider, wine, pre-mixed, espresso coffee, ice creams, chocolates, muffins and plenty more.

Cafe / Bar hours will be:

Friday	4pm - 10pm	Saturday	8am - 10pm
Sunday	7am - 9pm	Monday	8am - 9pm
Tuesday	8am - 1pm		(Bar service from 10am)

Breakfast is available each day from the cafe.

Please pre-order the night before.

Cereal & Juice	\$4.50
Bacon & Egg Roll	\$5.00
Bacon & Egg Roll & Juice	\$7.00

Lunch menu (to be ordered in morning for collection from cafe).

Rolls	\$6.00	Sausage Rolls	\$4.50
Nachos	\$7.50	Hot Dogs	\$4.00
Gourmet Pies	\$5.50	Dim Sims	\$1.00
Vegetarian Pasties	\$5.50	Pasta & Bolognese	\$5.00

Evening meals will be available by pre-ordering online. We stress that you must pre-order your evening meals online prior to the event. Those who do not pre-order will not be guaranteed meals on Saturday or Sunday evening.

**Friday Evening** - Wood fired Pizza \$10

**Saturday Evening** - Adults: Gourmet BBQ (Salmon, Scotch Fillet, Hamburger) or Vegetarian Lasagne Kids: Pasta & Bolognese or Vegetarian Lasagne  
Both Adult and Child meals include desert (Pavlova or Trifle Cup)

	Adults	\$25	Child U/12	\$15
If NOT pre-ordered	Adults	\$30	Child U/12	\$20

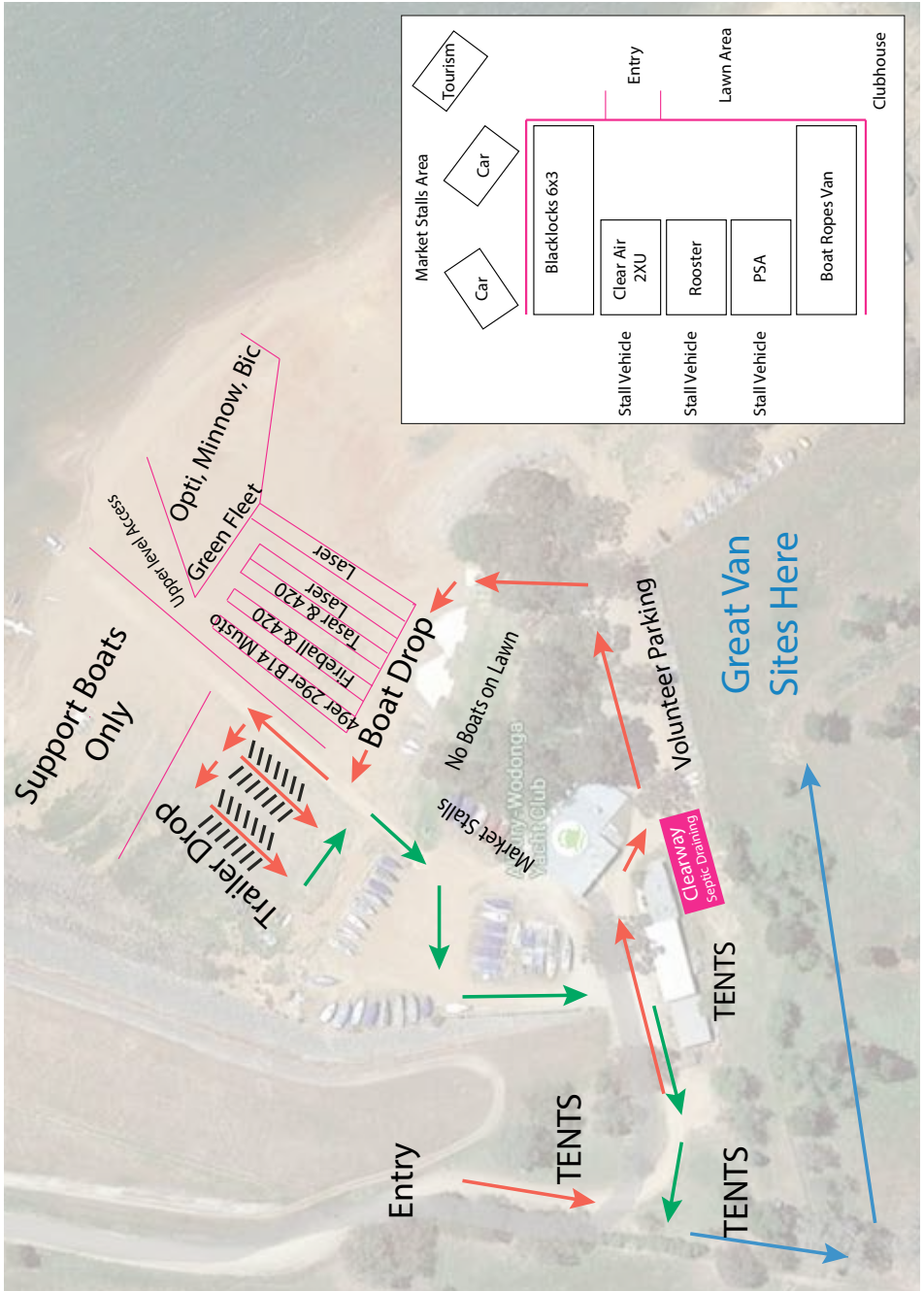
**Sunday Evening** - Cook your own BBQ pack inc Salad - Beef/Chicken/Vegetarian

Adults	\$15.00	Child U/12	\$10.00
--------	---------	------------	---------

**Monday Evening** - Wood fired Pizza \$10.00

Full menu options can be viewed at [www.sailcountry.com/food](http://www.sailcountry.com/food)

# Mud Map, Traffic Flow



# Car and Trailer Parking, Support Boats

## Car and Trailer Parking

Due to lower lake levels, foreshore conditions have changed and we request you follow the instructions of our shore marshalls. With 200 competing boats as well their family, friends and regatta support we have a lot of people on-site. Trailers and tow vehicles for coaching and support personnel boats must be removed from the western boat/trailer park and launching ramp immediately after launching and parked in the designated area.

Trailers that need to be accessed during the regatta will be allocated a spot to the east of the clubhouse. Additional trailer parking will be in the lower paddock next to the AWYC. Car parking will be to the East of the Clubhouse and again in the paddock.

## Rigging Areas

The areas available for rigging will depend on water levels at the time of the regatta. The club grounds and foreshore areas are secure and will be under surveillance during the regatta. Boats can be left in the rigging areas overnight during the regatta. Areas may be designated to specific classes depending on number of entries. These areas will be marked and pointed out at boat drop off and registration.

## Launching Ramp

The western boat park and launching ramp will be closed to unauthorised use between noon on 2 /11/2018 and 3pm on 4/11/2018. Authorised Boats include: -

1. Trailable yachts used as start and finish boats
2. Powered boats used for course laying
3. Powered boats and RIBs used for rescue and recovery purposes
4. Powered boats and RIBs used for media and sponsor/VIP purposes
5. Other powered boats utilised by Regatta Management
6. Coach and competitor support personnel boats that are registered with Regatta Management
7. Coast Guard and Police boats.

These boats will be identified by flying a yellow flag or by flying the relevant media/sponsor/VIP/registered coach or support personnel boat flag.

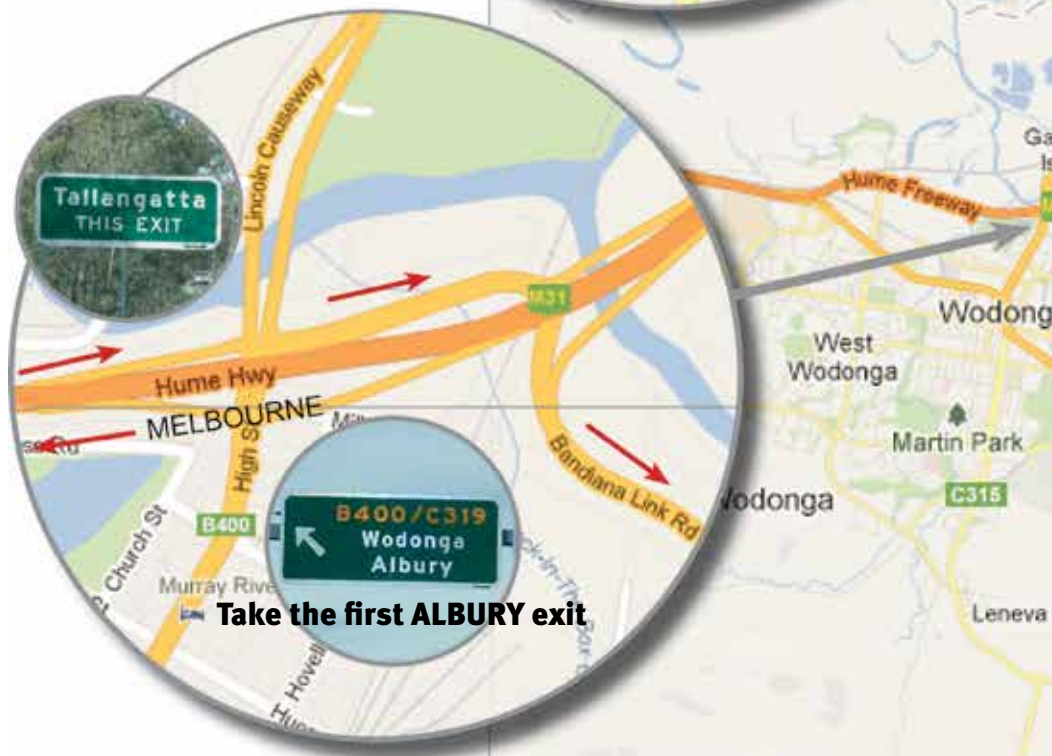
## Support Boats

Coach and support personnel boats must be registered before the event. Registration forms are available on the Sail Country Website (and at registration). All unregistered support and spectator boats are required to launch from elsewhere on Lake Hume, such as Kangaroo Point, Lake Hume Resort (or as otherwise advised). Swing mooring facilities will be available for support and spectator boats during the regatta. We advise that boats can be left in the water overnight at the owners risk.

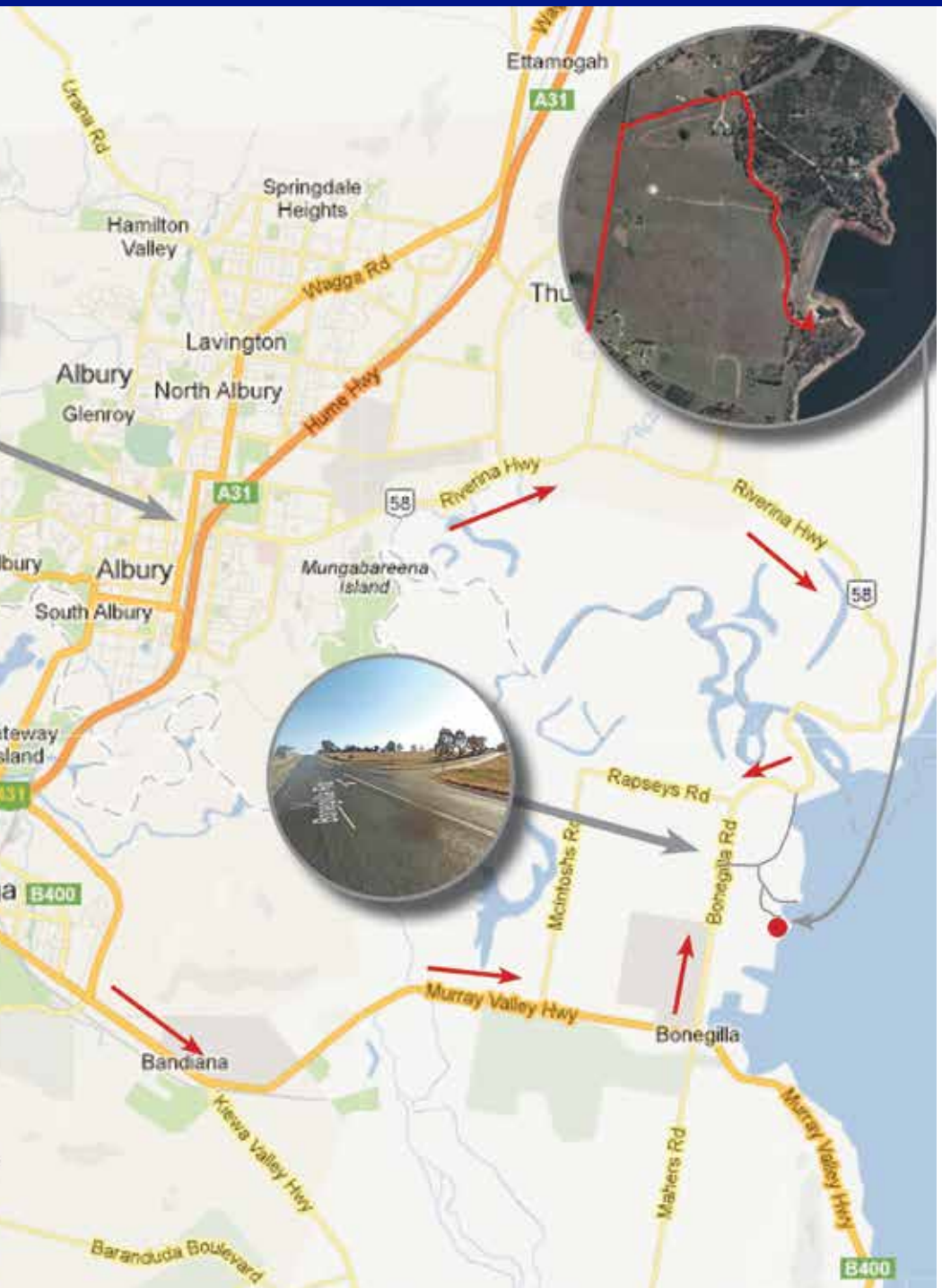
# Location

Albury Wodonga Yacht Club  
Old Weir Road, Lake Hume  
Bonegilla Victoria 3691

Look for the brown  
“Sailing” sign on  
Bonegilla Road  
for the turn off



**Take the first ALBURY exit**



# Accommodation Options

**Limited Camping is available at our Club and must be booked in advance to secure your site.**

For the Sail Country regatta we have arranged access to the neighbour's paddock for extra camping space.

Regatta volunteers will be available from Friday afternoon to guide you to a suitable site.

Camping needs to be booked online via trybooking. This can be done as part of your regatta entry or by visiting [www.sailcountry.com/accommodation](http://www.sailcountry.com/accommodation)

Camping fees Per Person / Per Night:  
Adults - \$10 per night  
Child U/12 - \$5 per night

Sites are not powered but a small camp kitchen will be available with fridges, microwaves, kettles and toasters.

**Generators can only be used between 8am and 8pm.** We appreciate your compliance to avoid a future ban.

We have a strict NO PET policy (guide dogs accepted). Please take this into account as you will be turned away if you arrive with a pet.

Please separate your Rubbish and Recyclables in the appropriate supplied bins.

As we are in the country please bring along any medications / ventolin if you have hayfever, allergies or asthma.

If you would like to camp at our Club but do not have a van or tent considering hiring.

**Camper Trailers Albury-Wodonga**  
(formerly Johnno's Camper Trailers)  
Scott & Linda Fraser  
**P:** 0458 525 282  
**E:** [info@campertrailer.com.au](mailto:info@campertrailer.com.au)  
[www.campertrailersalbury.com.au](http://www.campertrailersalbury.com.au)

**Albury Wodonga RV World**  
5 Melrose Drive  
Wodonga VIC 3690  
**P:** 02 6024 4222  
**E:** [wendy@awrvworld.com.au](mailto:wendy@awrvworld.com.au)  
[www.awrvworld.com.au](http://www.awrvworld.com.au)

Campers may also like to check out the following caravan / camper hire websites for availability:  
[www.camplify.com.au](http://www.camplify.com.au)  
[www.privatecaravanhire.com.au](http://www.privatecaravanhire.com.au)  
[www.campertravel.com.au](http://www.campertravel.com.au)  
[www.getaboutoz.com](http://www.getaboutoz.com)

Albury and Wodonga are filled with many motels. Please view the Albury Wodonga Motel Associations webpage  
[www.alburywodongamotels.com.au](http://www.alburywodongamotels.com.au)

Accommodation options closest to AWYC include:  
Lake Hume Resort  
Lake Hume Tourist Park  
Big4 Lake Hume (formerly Boathaven)

Please book your accommodation early if not camping with us as there are many events happening in our region that weekend.



## Services nearby

### Fuel

- 1** Kangaroo Point Store  
Bonegilla Road, Ebden
- 2** CALTEX Wodonga Riverina  
89 Thomas Mitchell Dr, Wodonga
- 3** Shell Service Station  
Cnr David St & Guinea St, Albury

### Convenience Stores

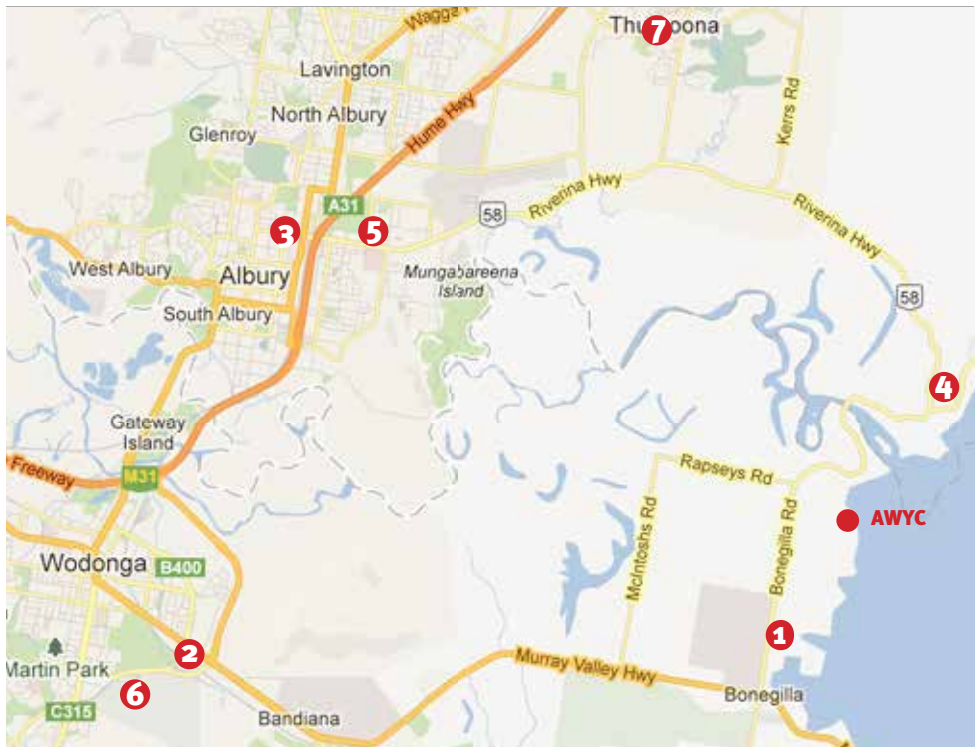
- 1** Kangaroo Point Store  
Bonegilla Road, Ebden
- 4** Lake View Cafe  
37 Murray St, Lake Hume Village

### Groceries

- 5** IGA Albury  
184 Borella Rd, Albury
- 6** Woolworths  
Cnr Victoria Cross Parade & Kelliher Avenue Wodonga
- 7** Woolworths  
10 Shuter Ave, Thurgoona

### ATM

- 1** Kangaroo Point Store  
Bonegilla Road, Ebden
- 4** Lake View Cafe  
37 Murray St, Lake Hume Village



## Things to do (Other than enjoying our Club)

### **Bonegilla Migrant Experience**

Seven days a week 10am - 4pm  
[www.bonegilla.org.au](http://www.bonegilla.org.au)

### **Bandiana Army Museum**

Tues/Thurs/Sat 10am to 2pm  
[www.army.gov.au/Our-history/Army-Museum-Network/Corps-Museums](http://www.army.gov.au/Our-history/Army-Museum-Network/Corps-Museums)

### **MAMA - Murray Art Museum Albury**

Seven Days  
[www.mamalbury.com.au](http://www.mamalbury.com.au)

### **Albury Library Museum**

Seven Days  
[www.alburycity.nsw.gov.au/leisure-and-culture/libraries-and-museum/librarymuseum](http://www.alburycity.nsw.gov.au/leisure-and-culture/libraries-and-museum/librarymuseum)

### **ArtSpace Wodonga**

Monday - Saturday  
[www.wodonga.vic.gov.au/leisure-arts-visitors/arts-culture/arts-space.asp](http://www.wodonga.vic.gov.au/leisure-arts-visitors/arts-culture/arts-space.asp)

### **Helifty** (Helicopter Scenic Tours)

Seven Days a week  
[www.helifty.com.au](http://www.helifty.com.au)

### **Wodonga Ten Pin Bowling**

Seven days a week 9am - 9pm  
[www.wodongatentpin.com.au](http://www.wodongatentpin.com.au)

### **Flip Out Albury**

Seven days a week  
[www.flipout.net.au/flip-out-indoor-trampoline-arena-albury](http://www.flipout.net.au/flip-out-indoor-trampoline-arena-albury)

### **Supa Tramp**

Seven days a week  
[www.supatramp.com.au/hours-prices-wodonga](http://www.supatramp.com.au/hours-prices-wodonga)

### **Albury Climbing Centre**

(Indoor Rock Climbing)  
15 Hudson Cres  
Tuesday - Sunday  
[www.facebook.com/AlburyClimbingCentre](http://www.facebook.com/AlburyClimbingCentre)

### **Zone Laser Tag & 9 Hole Mini Golf**

Tuesday - Sunday  
[www.zonelasertagalbury.com.au](http://www.zonelasertagalbury.com.au)

### **Escape Room**

Seven days a week  
[www.escaperoomalbury.com.au](http://www.escaperoomalbury.com.au)

### **Totally Fun Amusement Park**

Sat/Sun 9:30am to 5pm  
[www.totallyfun.com.au](http://www.totallyfun.com.au)

### **Regent Cinemas**

[www.regentcinemas.com.au](http://www.regentcinemas.com.au)

### **Intensity Game Centre**

[www.regentcinemas.com.au/Page/Intencity](http://www.regentcinemas.com.au/Page/Intencity)

### **Wonga Wetlands**

Monday - Friday 8:30am - 4:30pm  
[www.alburycity.nsw.gov.au/leisure-and-culture/wonga-wetlands](http://www.alburycity.nsw.gov.au/leisure-and-culture/wonga-wetlands)

### **Canoe The Murray** (Hire & Tours)

Seven Days  
Trips @ 8.30, 10.30, 12.30 & 2.30  
[www.canoethemurray.com.au](http://www.canoethemurray.com.au)

Looking for something different? Visit What's on Albury Wodonga, [www.visitalburywodonga.com](http://www.visitalburywodonga.com). Download the official visitor guide at [ovg.visitalburywodonga.com/#folio-1](http://ovg.visitalburywodonga.com/#folio-1)

# Useful Information

## **EMERGENCY**

**Police, Fire, Ambulance 000**  
**Poison Help Line 131 126**

### **Albury Police Station**

539-543 Olive Street Albury  
02 6023 9299

### **Wodonga Police Station**

100 Hovell Street Wodonga  
02 6049 2600

## **HOSPITALS**

### **Albury Hospital (A&E Dept)**

East Street Albury  
02 6058 4444

### **Wodonga Hospital**

Cnr Wilson & Vermont Sts Wodonga  
02 6051 7111

## **AFTER HOURS CLINIC**

Albury Hospital, East St, East Albury  
02 6021 0188

## **National Home Doctor Service**

137425

## **Prime Care Dental**

340 Beechworth Road, Wodonga  
02 6024 1516

## **DOCTORS (BULK BILLED)**

### **Tristar Medical Centre**

1136 Pemberton St, Albury  
02 6021 4000

### **Elmwood Medical Centre**

291 Beechworth Rd, Wodonga  
02 6056 2011

### **Daintree Medical Centre**

7 Daintree Way, West Wodonga  
02 6059 2700

## **PHARMACIES**

### **Chemist Warehouse**

Olive Street, Albury  
Mon-Fri 9am - 9pm  
Saturday 9am - 5pm  
Sunday 10am - 5pm

### **Guardian Pharmacy**

178 High Street, Wodonga  
(Next to Coles)  
Mon-Sun 9am - 9pm

## **TAXI SERVICES**

Albury 02 6025 2255  
Wodonga 02 6024 3444

## **VISITOR INFORMATION CENTRES**

### **Albury**

Cnr Smollett & Young Sts, Albury  
1300 ALBURY (1300 252 879)

### **Wodonga**

69-73 Hovell St, Wodonga  
1300 796 222

# Sponsors

## Gold



## Silver



## Bronze

