

SAIL COUNTRY

A L B U R Y W O D O N G A

**2-3 November
2019**



www.sailcountry.com

Because everyone deserves a weekend in the country!

Many Classes will be holding coaching camps Mon 4th and Tues 5th Nov.

Contact your class association to explore what may be on offer after the regatta and have a long weekend.



Albury Wodonga Yacht Club
Old Weir Rd, Lake Hume, Bonegilla, Vic, 3691.

Sail Country Event Organiser - Phil Clements

Phone: 0407 272 375 Email: sail.country@awyc.org.au

Facebook: <https://www.facebook.com/sailcountry/>



Welcome to Sail Country from our Commodore

I would like to welcome you to the Albury Wodonga Yacht Club. Many of you may be return visitors to our “Little Club in the Country” and we thank you for again making the trip. For those of you who are here for the first time, I hope you enjoy your stay and take every opportunity to make the most of our relaxed country setting.

Dating from our foundation in 1958 we have a proud history of hosting regattas that don't just offer quality racing, but a unique freshwater experience on one of the largest inland waterways in Australia. Sail Country is not just about the racing, but enjoying our country hospitality and finding time to socialize with fellow sailors.

Please make use of our grounds and facilities whilst visiting and if you are unsure of anything at all please don't hesitate to ask one of the Regatta Volunteers for assistance. Regatta Volunteers can be identified by their orange cap for on-shore matters and a green cap for on-water.

Please note our Club has a strict NO PET POLICY (guide and assistance dogs accepted). Please take this into account when planning your visit as you will be turned away if you arrive with a pet.

On behalf of the AWYC Committee and members I would like to wish you a happy and enjoyable weekend and every success if you are competing . We hope your experiences will leave you looking forward to your next chance to come back to Lake Hume and our Little Club in the Country.

Regards

Jeff Stirling

Acting AWYC Commodore 2019/20

Albury Wodonga Yacht Club Contact Details

Club House Phone:	0459 533 583
Street Address:	Old Weir Road Lake Hume Bonegilla VIC 3691
Postal Address:	PO Box 640 Albury NSW 2640
AWYC Website:	www.awyc.org.au
Event Coordinator:	Phil Clements
Phone:	0407 272 375
Email:	sail.country@awyc.org.au



facebook.com/AlburyWodongaYC



twitter.com/AlburyWodongaYC



youtube.com/AlburyWodongaSailing



instagram.com/alburywodongayachtclub

The Yardarm Cafe and Bar

During Sail Country our licensed Cafe will be open daily serving breakfast, lunch and dinner. Snacks and drink are available during the day and into the evening including beer, cider, wine, pre-mixed, espresso coffee, ice creams, chocolates, muffins and plenty more.

Cafe / Bar hours will be:

Friday	4pm - 10pm	Saturday	8am - 10pm
Sunday	7am - 9pm	Monday	8am - 9pm
Tuesday	8am - 1pm		(Bar service from 10am)

Breakfast is available each day from the cafe.

Please pre-order the night before.

Cereal & Juice	\$4.50
Bacon & Egg Roll	\$5.00
Bacon & Egg Roll & Juice	\$7.00

Lunch menu (to be ordered in morning for collection from cafe).

Rolls	\$6.00	Sausage Roll	\$4.00
Nachos	\$7.50	Spinach & Ricotta Roll	\$4.00
Gourmet Pies	\$5.50	Hot Dogs	\$4.00
Vegetarian Pastie	\$5.50	Dim Sims	\$1.00
Pasta & Bolognese	\$5.00		

Evening meals will be available by pre-ordering online. We stress that you must pre-order your evening meals online prior to the event. Those who do not pre-order will not be guaranteed meals on Saturday or Sunday evening.

Friday Evening - Wood fired Pizza \$12

Saturday Evening - Adults: Gourmet BBQ (Salmon, Scotch Fillet, Hamburger) or Vegetarian Lasagne Kids: Pasta & Bolognese or Vegetarian Lasagne
Both Adult and Child meals include dessert (Pavlova or Trifle Cup)

	Adults	\$25	Child U/12	\$15
If NOT pre-ordered	Adults	\$30	Child U/12	\$20

Sunday Evening - Cook your own BBQ pack inc Salad - Beef/Chicken/Vegetarian

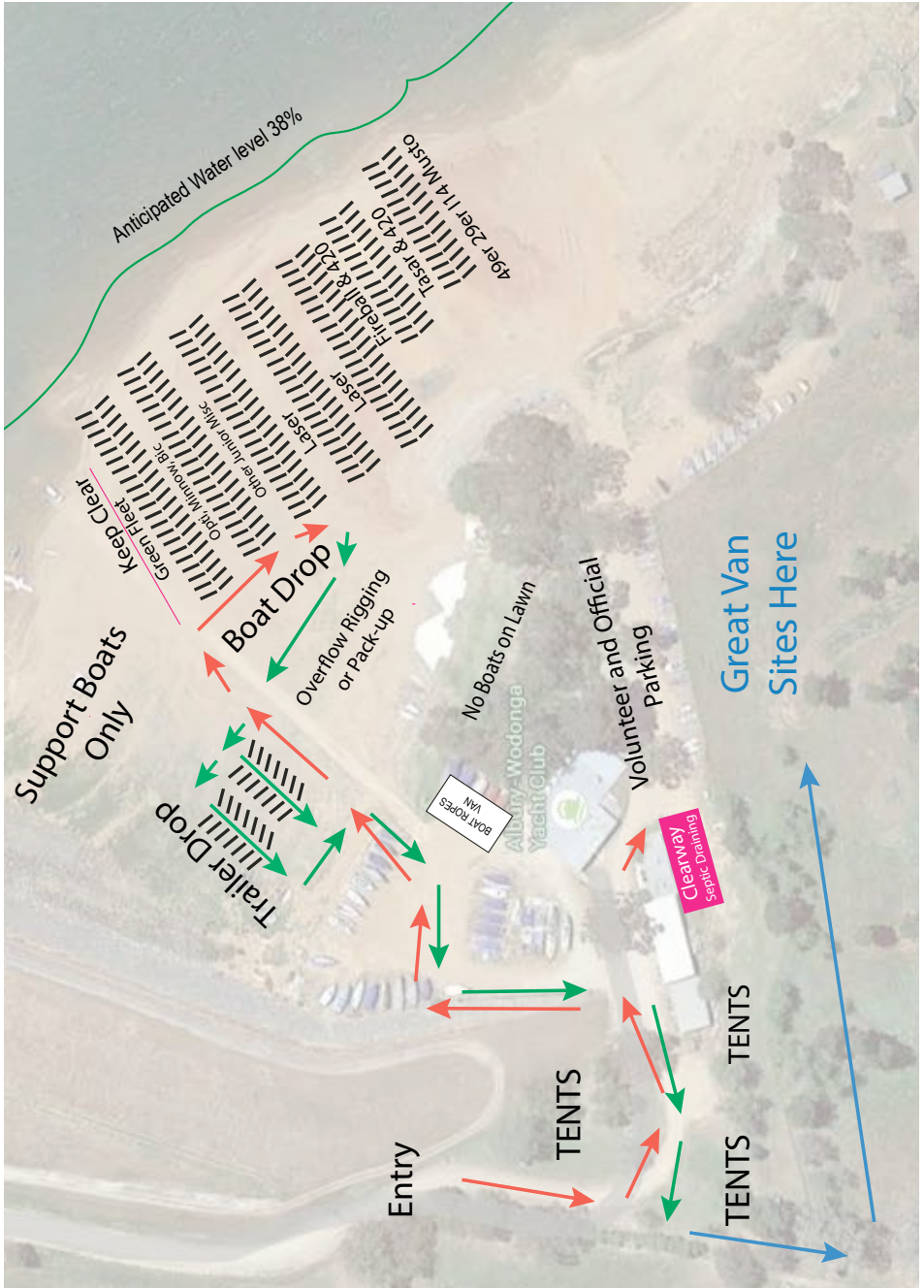
Adults	\$15.00	Child U/12	\$10.00
--------	---------	------------	---------

Monday Evening - Wood fired Pizza \$12.00

Full menu options can be viewed at www.sailcountry.com/food

*All prices include gst

Mud Map, Traffic Flow



Car and Trailer Parking, Support Boats

Car and Trailer Parking

Due to lower lake levels, foreshore conditions have changed and we request you follow the instructions of our shore marshalls. With 200 competing boats as well as their family, friends and regatta support, we have a lot of people on-site. Trailers and tow vehicles for coaching and support personnel boats must be removed from the launching ramp immediately after launching and parked in the designated area. Competitors trailers will this year be stored to the west of the main ramp in the designated area. Additional trailer parking will be in the lower paddock next to the AWYC. Car parking will be in the paddock next to the AWYC there is no visitor parking within the club grounds during the event. Access to these areas is for volunteer personnel and services for the event.

Rigging Areas

The areas available for rigging will depend on water levels at the time of the regatta. The club grounds and foreshore areas are secure and will be under surveillance during the regatta. Boats can be left in the rigging areas overnight during the regatta. Areas may be designated to specific classes depending on number of entries. These areas will be marked and pointed out at boat drop off and registration.

Launching Ramp

Launching ramp will be closed to unauthorised use between noon on 1/11/2019 and 3pm on 3/11/2019. Authorised Boats include: -

1. Trailable yachts used as start and finish boats
2. Powered boats used for course laying
3. Powered boats and RIBs used for rescue and recovery purposes
4. Powered boats and RIBs used for media and sponsor/VIP purposes
5. Other powered boats utilised by Regatta Management
6. Coach and competitor support personnel boats that are registered with Regatta Management
7. Coast Guard and Police boats.

These boats will be identified by flying a yellow flag or by flying the relevant media/sponsor/VIP/registered coach or support personnel boat flag.

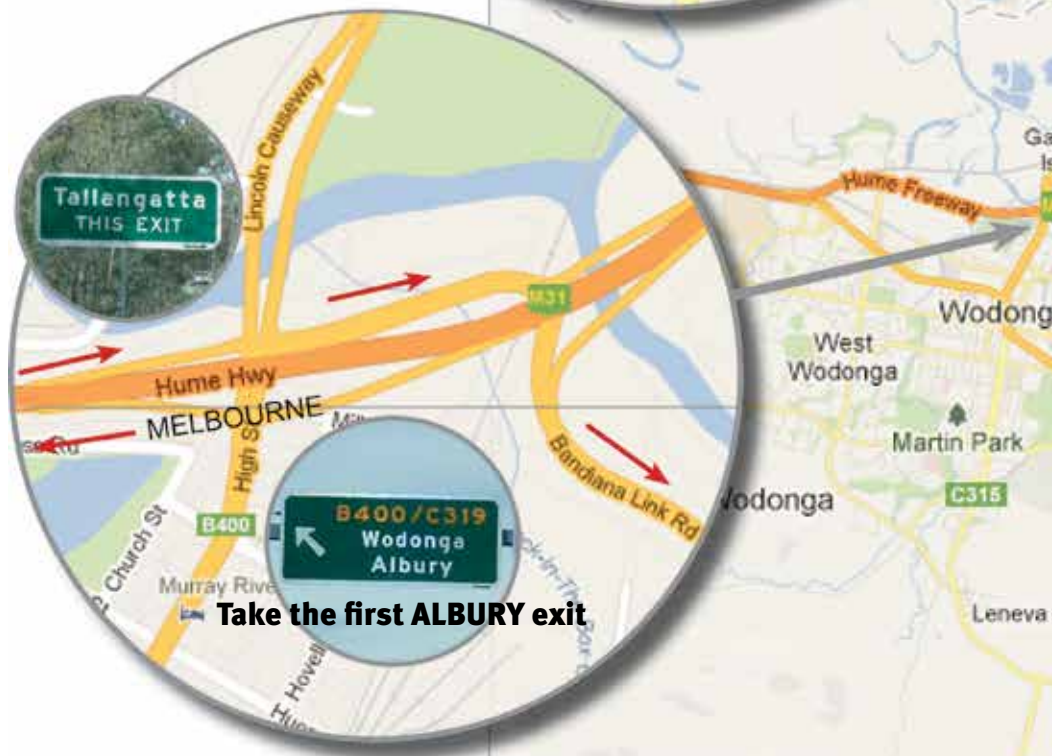
Support Boats

Coach and support personnel boats must be registered before the event. Registration forms are available on the Sail Country Website (and at registration). All unregistered support and spectator boats are required to launch from elsewhere on Lake Hume, such as Kangaroo Point, Lake Hume Resort (or as otherwise advised). Swing mooring facilities will be available for support and spectator boats during the regatta. We advise that boats can be left in the water overnight at the owners risk.

Location

Albury Wodonga Yacht Club
Old Weir Road, Lake Hume
Bonegilla Victoria 3691

Look for the brown
“Sailing” sign on
Bonegilla Road
for the turn off



Take the first ALBURY exit



Accommodation Options

Limited Camping is available at our Club and must be booked in advance to secure your site.

For the Sail Country regatta we have arranged access to the neighbour's paddock for extra camping space.

Regatta volunteers will be available from Friday afternoon to guide you to a suitable site.

Camping needs to be booked online via trybooking. This can be done as part of your regatta entry or by visiting www.sailcountry.com/accommodation

Camping fees Per Person / Per Night:
Adults - \$10 per night
Child U/12 - \$5 per night

Sites are not powered but a small camp kitchen will be available with fridges, microwaves, kettles and toasters.

Generators can only be used between 8am and 8pm. We appreciate your compliance to avoid a future ban.

NO FIRES, no solid-fuel heating or cooking appliances (open or closed) are allowed.

We have a strict **NO PET** policy (guide dogs accepted). Please take this into account as you will be turned away if you arrive with a pet.

Please separate your Rubbish and Recyclables in the appropriate supplied bins.

As we are in the country please bring along any medications / ventolin if you have hayfever, allergies or asthma.

If you would like to camp at our Club but do not have a van or tent considering hiring.

Camper Trailers Albury-Wodonga
(formerly Johnno's Camper Trailers)
Scott & Linda Fraser
P: 0458 525 282
E: info@campertrailer.com.au
www.campertrailersalbury.com.au

Albury Wodonga RV World
5 Melrose Drive
Wodonga VIC 3690
P: 02 6024 4222
E: wendy@awrvworld.com.au
www.awrvworld.com.au

Campers may also like to check out the following caravan / camper hire websites for availability:
www.camplify.com.au
www.privatecaravanhire.com.au
www.campertravel.com.au
www.getaboutoz.com

Albury and Wodonga are filled with many motels. Please view the Albury Wodonga Motel Associations webpage
www.alburywodongamotels.com.au

Accommodation options closest to AWYC include:
Lake Hume Resort
Lake Hume Tourist Park
Big4 Lake Hume (formerly Boathaven)

Services nearby

Fuel

- 1** Kangaroo Point Store
Bonegilla Road, Ebden
- 2** CALTEX Wodonga Riverina
89 Thomas Mitchell Dr, Wodonga
- 3** Shell Service Station
Cnr David St & Guinea St, Albury

Convenience Stores

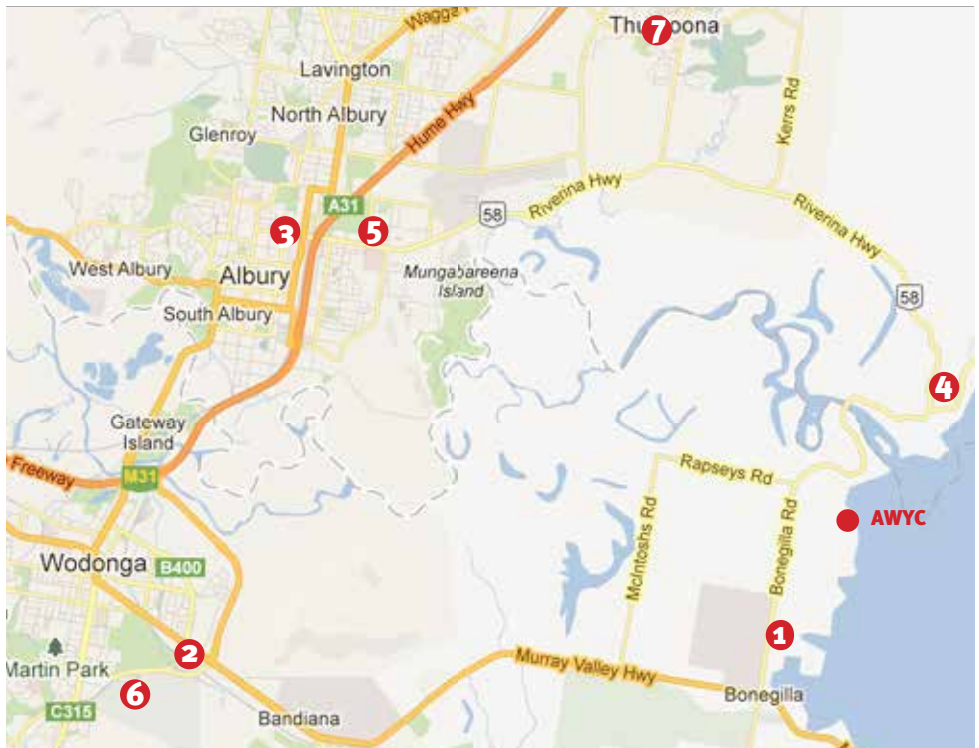
- 1** Kangaroo Point Store
Bonegilla Road, Ebden
- 4** Lake View Cafe
37 Murray St, Lake Hume Village

Groceries

- 5** IGA Albury
184 Borella Rd, Albury
- 6** Woolworths
Cnr Victoria Cross Parade & Kelliher Avenue Wodonga
- 7** Woolworths
10 Shuter Ave, Thurgoona

ATM

- 1** Kangaroo Point Store
Bonegilla Road, Ebden
- 4** Lake View Cafe
37 Murray St, Lake Hume Village



Things to do (Other than enjoying our Club)

Bonegilla Migrant Experience

Seven days a week 10am - 4pm
www.bonegilla.org.au

Bandiana Army Museum

Tues/Thurs/Sat 10am to 2pm
www.army.gov.au/Our-history/Army-Museum-Network/Corps-Museums

MAMA - Murray Art Museum Albury

Seven Days
www.mamalbury.com.au

Albury Library Museum

Seven Days
www.alburycity.nsw.gov.au/leisure-and-culture/libraries-and-museum/librarymuseum

ArtSpace Wodonga

Monday - Saturday
www.wodonga.vic.gov.au/leisure-arts-visitors/arts-culture/arts-space.asp

Helifty (Helicopter Scenic Tours)

Seven Days a week
www.helifty.com.au

Wodonga Ten Pin Bowling

Seven days a week 9am - 9pm
www.wodongatentpin.com.au

Flip Out Albury

Seven days a week
www.flipout.net.au/flip-out-indoor-trampoline-arena-albury

Supa Tramp

Seven days a week
www.supatramp.com.au/hours-prices-wodonga

Albury Climbing Centre

(Indoor Rock Climbing)
15 Hudson Cres
Tuesday - Sunday
www.facebook.com/AlburyClimbingCentre

Zone Laser Tag & 9 Hole Mini Golf

Tuesday - Sunday
www.zonelasertagalbury.com.au

Escape Room

Seven days a week
www.escaperoomalbury.com.au

Totally Fun Amusement Park

Sat/Sun 9:30am to 5pm
www.totallyfun.com.au

Regent Cinemas

www.regentcinemas.com.au

Intensity Game Centre

www.regentcinemas.com.au/Page/Intencity

Wonga Wetlands

Monday - Friday 8:30am - 4:30pm
www.alburycity.nsw.gov.au/leisure-and-culture/wonga-wetlands

Canoe The Murray (Hire & Tours)

Seven Days
Trips @ 8.30, 10.30, 12.30 & 2.30
www.canoethemurray.com.au

Looking for something different? Visit What's on Albury Wodonga, www.visitalburywodonga.com. Download the official visitor guide at ovg.visitalburywodonga.com/#folio-1

Useful Information

EMERGENCY

Police, Fire, Ambulance 000
Poison Help Line 131 126

Albury Police Station

539-543 Olive Street Albury
02 6023 9299

Wodonga Police Station

100 Hovell Street Wodonga
02 6049 2600

HOSPITALS

Albury Hospital (A&E Dept)

East Street Albury
02 6058 4444

Wodonga Hospital

Cnr Wilson & Vermont Sts Wodonga
02 6051 7111

AFTER HOURS CLINIC

Albury Hospital, East St, East Albury
02 6021 0188

National Home Doctor Service

137425

Prime Care Dental

340 Beechworth Road, Wodonga
02 6024 1516

DOCTORS (BULK BILLED)

Tristar Medical Centre

1136 Pemberton St, Albury
02 6021 4000

Elmwood Medical Centre

291 Beechworth Rd, Wodonga
02 6056 2011

Daintree Medical Centre

7 Daintree Way, West Wodonga
02 6059 2700

PHARMACIES

Chemist Warehouse

Olive Street, Albury
Mon-Fri 9am - 9pm
Saturday 9am - 5pm
Sunday 10am - 5pm

Guardian Pharmacy

178 High Street, Wodonga
(Next to Coles)
Mon-Sun 9am - 9pm

TAXI SERVICES

Albury 02 6025 2255
Wodonga 02 6024 3444

VISITOR INFORMATION CENTRES

Albury

Cnr Smollett & Young Sts, Albury
1300 ALBURY (1300 252 879)

Wodonga

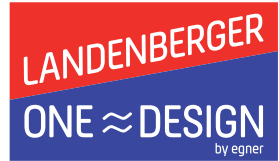
69-73 Hovell St, Wodonga
1300 796 222

Sponsors

Gold



Silver



Bronze

