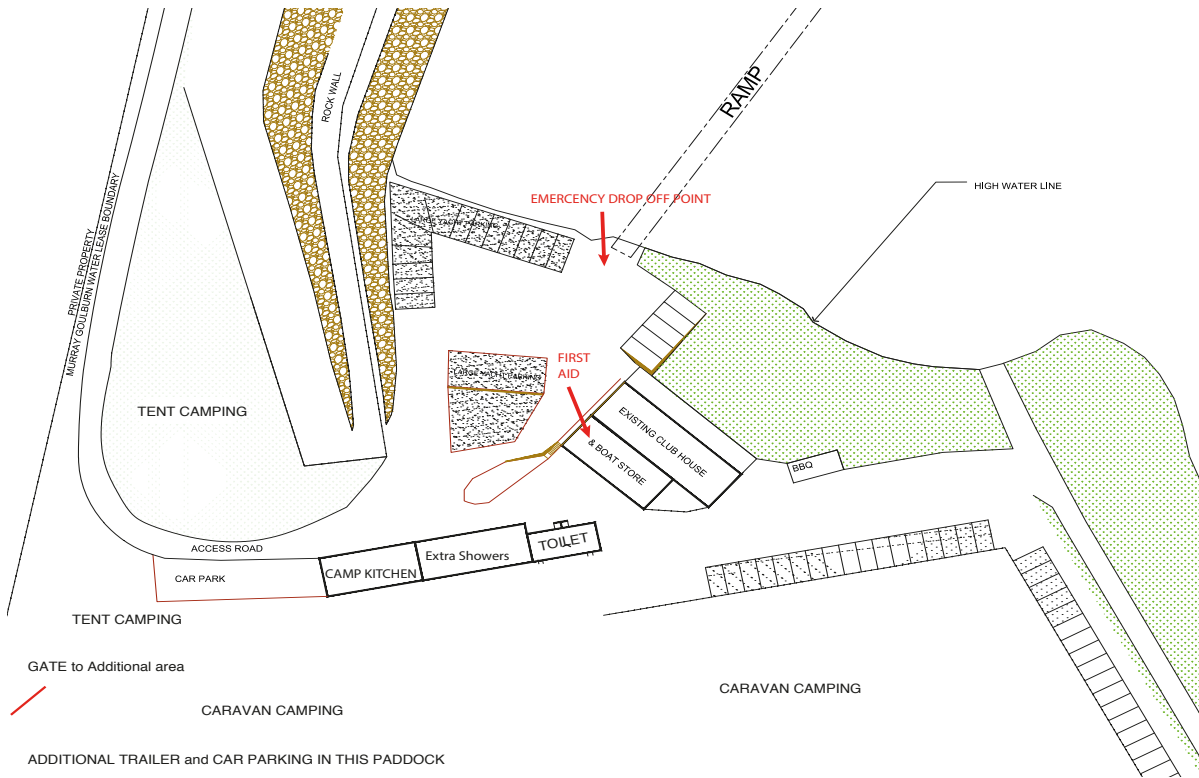
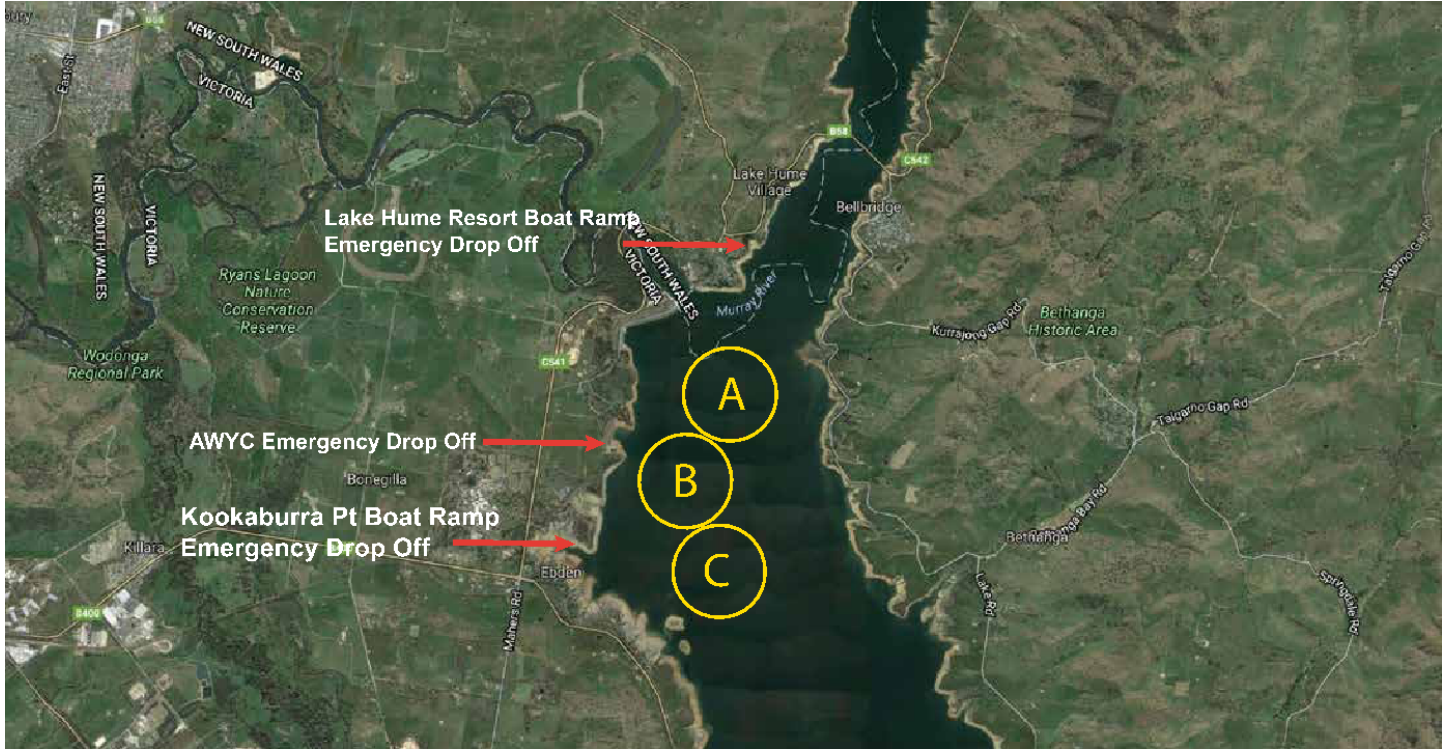


SAIL COUNTRY

SAFETY GUIDE for SUPPORT VESSELS

Albury Wodonga Yacht Club



- All vessels are required to monitor the VHF channel of the course area they are on
- All vessels must not use the listed VHF radio channels below unless involved in race management or an incident (no idle chatter)
- Use your course call sign or support/coach call sign when communicating via radio
- When radioing incidents details - provide class and sail number. Avoid individual's names
- Call signs for Race Officers are "Alpha Start" & "Bravo Start" & "Charlie Start" & "Green Fleet Start"

Alpha Course	VHF 71
Bravo Course	VHF 72
Charlie Course	VHF 73
Green Fleet	VHF 74
SAFETY CHANNEL / Principal Race Officer	VHF 8
Emergency Distress	VHF 16

- 1. Non Critical Assistance** (standing by an overturned dinghy)
 - Vessels involved in assisting non critical incidents are to inform the course Race Officer (RO) of the incident and location on the course VHF channel
 - RO will acknowledge incident and appoint a registered 'support vessel' (usually the reporting vessel) to stand by and then return to RO duties
 - Support vessel to radio Principal Race Officer (PRO) on Safety Channel (VHF 8) outcome of incident (eg boat returning to shore/returning to race area)
- 2. Moderate Incident** (dismasting/requiring assistance to return to shore)
 - Vessels involved in assisting non critical incidents are to inform the course RO of the incident and location on the course VHF channel
 - RO will acknowledge incident and appoint a registered 'support vessel' (usually the reporting vessel) to assist and then return to RO duties
 - Support vessel to radio PRO on Safety Channel (VHF 8) outcome of incident (safety boat leaving course area with competitor and advise sail number of competitor)
 - Support vessel to radio PRO on Safety Channel (VHF 8) outcome of rescue (when competitor has returned to shore)
- 3. Critical Incident** (Injury-competitor(s) unable to return to shore unassisted)
 - First available support boat (the Reporting Vessel) at scene informs RO by radioing '**RESCUE RESCUE RESCUE**' on course channel and provides continuing assistance to the injured
 - Upon '**RESCUE RESCUE RESCUE**' all radio traffic on the course ceases for non critical incidents
 - RO will acknowledge incident, inform PRO on Safety Channel and standby on both Course and Safety Channel (VHF 8)
 - PRO will inform Emergency First Aider and request assistance from Coast Guard or SES. PRO will inform course RO of action taken
 - PRO will direct the Reporting Vessel to guide and assist Coast Guard/SES and support boats close to incident on safety channel
 - Reporting Vessel to provide incident updates to PRO on safety channel
 - PRO will advise Emergency First Aider of situation and they will call emergency services if required and provide situation updates to relevant parties (Course RO/Coast Guard/ SES/Emergency First Aider/Reporting Vessel)
 - Patients needing transfer to shore/emergency services should be taken to **Albury Wodonga Yacht Club boat ramp (Old Weir Road, Bonegilla)** or **Kookaburra Point (Bonegilla Road, Ebden)** or **Lake Hume Resort (Riverina Highway, Lake Hume Village)** as directed by the PRO.