

WELCOME TO THE ALBURY WODONGA YACHT CLUB



ALBURY WODONGA
YACHT CLUB

SAIL COUNTRY 2014 EVENT INFORMATION BOOKLET

www.sailcountry.com
www.facebook.com/sailcountry

Welcome to Sail Country from our Commodore

Welcome to the Albury Wodonga Yacht Club. AWYC is often referred to as the “Little Club in the Country” and we hope you find the same laid back relaxing environment here that our members experience every week on the shores of beautiful Lake Hume.

Founded in 1958 we have a proud history of hosting regattas that don’t just offer quality racing, but a unique freshwater experience on one of the largest inland waterways in Australia. Beautiful lawn areas (I highly recommend a sleep in one of our outdoor bean bags), wood fired pizza oven and BBQ area, children’s playground and plenty of space.

Please make use of our grounds and facilities whilst visiting and if you are unsure of anything at all please just ask any of the regatta volunteers anytime for assistance. We would rather you ask than not utilise something because you just weren’t sure.

Our Club has a strict “No Dog” policy (guide dogs accepted). Please take this into account when planning your visit for the comfort of other guests and your pet.

On behalf of my fellow flag officers and the AWYC members may I wish you good luck if you are competing in this regatta. We hope your experiences will leave you looking forward to your next chance to come back to the Little Club in the Country.

Stuart Richardson
AWYC Commodore 2014/15

Albury Wodonga Yacht Club Contact Details

Club House Phone: 0459 533 583
Street Address: Old Weir Road Lake Hume Bonegilla VIC 3691
Postal Address: PO Box 640 Albury NSW 2640
AWYC Website: www.awyc.yachting.org.au
Event Coordinator: Stuart Richardson - Commodore
Phone: 0409 386 516
Email: commodore@awyc.org.au



facebook.com/AlburyWodongaYC



twitter.com/AlburyWodongaYC



youtube.com/AlburyWodongaSailing



instagram.com/alburywodongayachtclub

The Yardarm Cafe and Bar

During Sail Country our licensed Cafe will be open daily serving breakfast, lunch and dinner. Snacks and drink are available during the day and into the evening including beer, cider, wine, pre-mixed, espresso coffee, ice creams, chocolates, muffins and plenty more.

Friday evening Wood Fired Pizzas are available for \$10 each.
Please pre-order at the Cafe upon arrival at the Club.

Cafe / Bar hours will be:

Friday	4pm - 8:30pm	Saturday	8am - 9pm
Sunday	7am - 9pm	Monday	8am - 9pm
Tuesday	8am - 5pm		(Bar service from 10am)

Breakfast is available each day from the cafe.

Please pre-order the night before.

Bacon & Egg Sandwiches & Juice	\$8
Cereal & Juice	\$6

Lunch menu (to be ordered in morning for collection from cafe).

Rolls / Sandwiches / Wraps	\$8
Nachos	\$8
Gourmet Pies	\$6
Sausage Rolls	\$4

Dinner will be BBQ Packs for Saturday and Sunday evening, to be cooked by you on the BBQs. Beef or Chicken available with salad included.

Adult Pack \$15

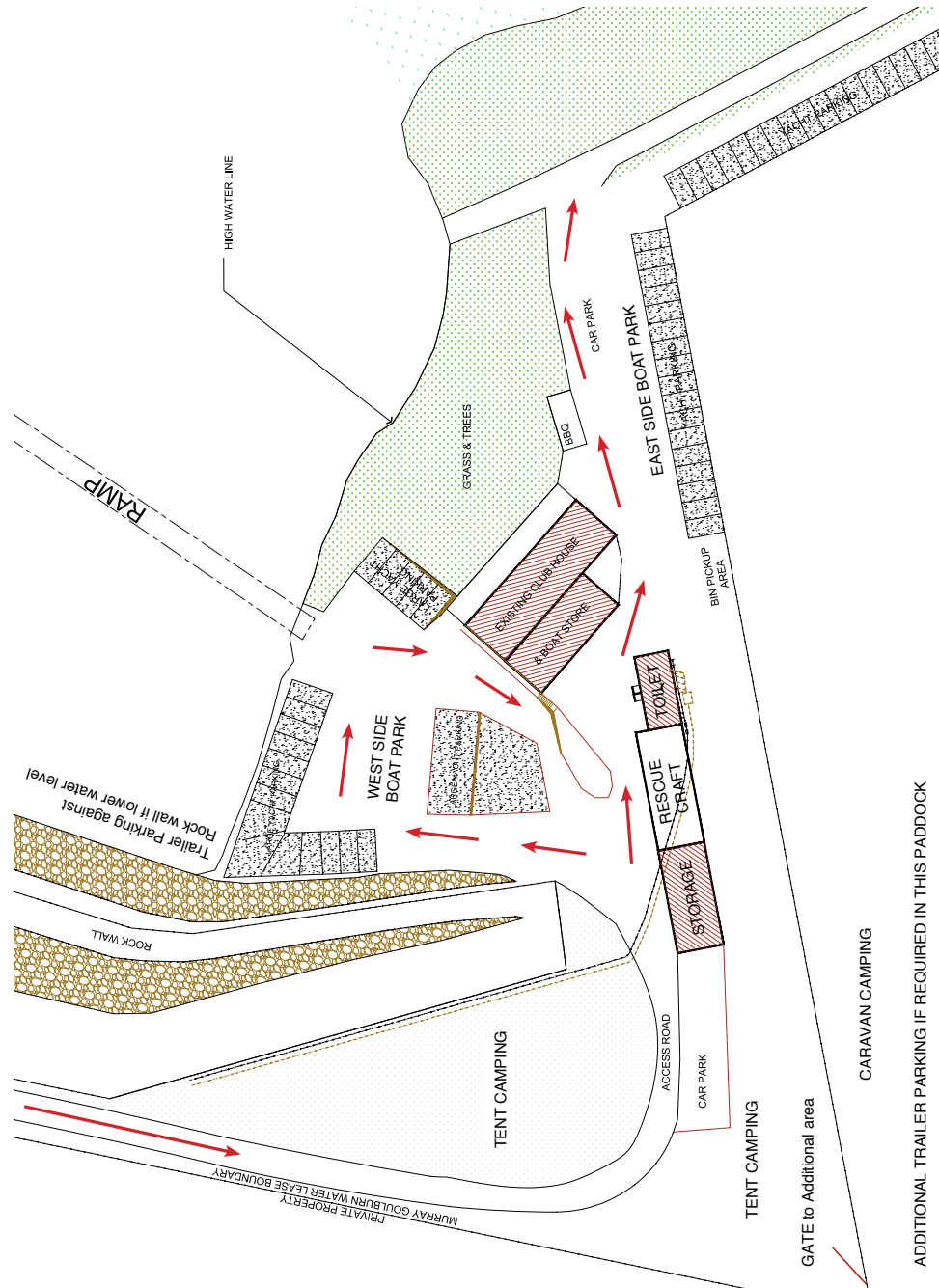
Child Pack \$10

BBQ Packs can be ordered (and paid) in the online event entry.

Monday and Tuesday Dinner will either be BBQ Packs or Wood Fired Pizzas.
To be confirmed during the event.

Note: Our Club does not have credit card / eftpos facilities available.

Mud Map, Traffic Flow



Car and Trailer Parking, Support Boats

Car and Trailer Parking

Trailers can be parked along the large rock wall to the left of the main launching ramp when the water is low enough. Additional trailer parking will be made available if required in the paddock adjacent to the Tent Camping Area. Car parking will be to the East of the Clubhouse and behind the main Toilet Block.

Rigging Areas

The areas available for rigging will depend on water levels at the time of the regatta. The club grounds and foreshore areas are secure and will be under surveillance during the regatta. Boats can be left in the rigging areas overnight during the regatta. Areas may be designated to specific classes depending on number of entries, these areas will be marked and pointed out at registration.

Launching Ramp

The main Launching Ramp at the club will be used during the regatta for launching and retrieving Club Rescue Craft. Support and spectator boats will be able to use this ramp outside the regatta days, but if numbers reach a level that present a risk to launch support / spectator boats at the club arrangements have been made to launch, retrieve and store these boats at the Angling Club, minutes from the club grounds.

Swing mooring facilities will be available for support and spectator boats during the regatta. We advise that boats should be removed from the water at the end of each day in case of an unpredictable weather change.

We request that you register your support and spectator boats before the event.

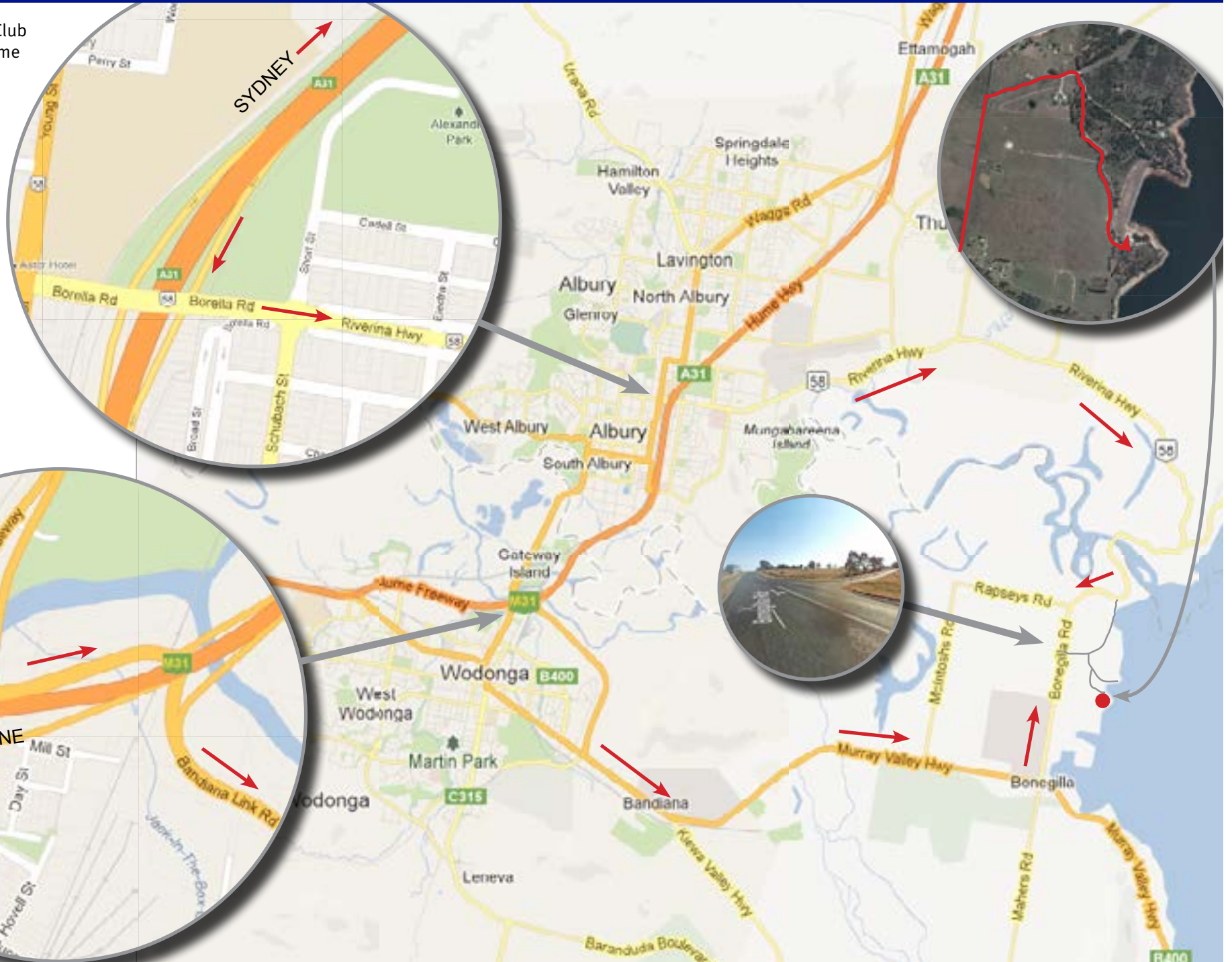
Support / Spectator Boat Registration forms will be available on our website.



Location

Albury Wodonga Yacht Club
Old Weir Road, Lake Hume
Bonegilla Victoria 3691

Look for the brown
“Sailing” sign on
Bonegilla Road
for the turn off



Accommodation Options

Limited Camping is available at our Club and must be booked in advance to secure your site.

For the Sail Country regatta we have arranged access to the neighbour's paddock for extra camping space if needed. Regatta volunteers will be available from Friday afternoon to guide you to a suitable site and help with setup. Sites are not powered but a small camp kitchen will be available with fridges and hot water.

Camping fees Per Person / Per Night:
Adults - \$10 per night
Child U/12 - \$5 per night

If you would like to camp at our Club but do not have a van or tent considering hiring:

Johnno's Camper Trailers

4 / 427 Wagga Road
Lavington NSW 2641
P: 02 6025 9439 or 0458 525 282
E: albury@campertrailer.com.au
www.campertrailersalbury.com.au

Camper Trailer Rental Albury

41 Catherine Crescent
Lavington NSW 2641
P: 02 6025 6022
www.campertrailerrental.com.au

Albury Wodonga RV World

5 Melrose Drive
Wodonga VIC 3690
P: 02 6024 4222
E: wendy@awrvworld.com.au
www.awrvworld.com.au

Albury and Wodonga are filled with many motels and if you are happy to drive all the way in to town then please view the Albury Wodonga Motel Associations webpage
www.alburywodongamotels.com.au

Accommodation options nearby:

ibis Styles Lake Hume Resort

Riverina Highway, Lake Hume Village
Albury NSW 2640
P: 02 6026 4444
E: reservations@lakehumeresort.com.au
www.ibisstylesalburylakehume.com.au

Lake Hume Tourist Park

37 Murray Street, Lake Hume Village
Albury NSW 2640
P: 02 6049 8100
E: stay@lakehumentouristpark.com.au
www.lakehumentouristpark.com.au

Boathaven Holiday Caravan Park

33 Boathaven Road, Lake Hume
Ebden VIC 3691
P: 02 6020 6130
E: boathaven@aspensparks.com.au
www.boathaven-holiday-park.vic.big4.com.au

Blazing Stump Comfort Inn & Suites

4327 Anzac Parade
Wodonga VIC 3690
P: 02 6056 3433
E: blazingstump@bigpond.com
www.blazingstump.com.au

Services nearby

Fuel

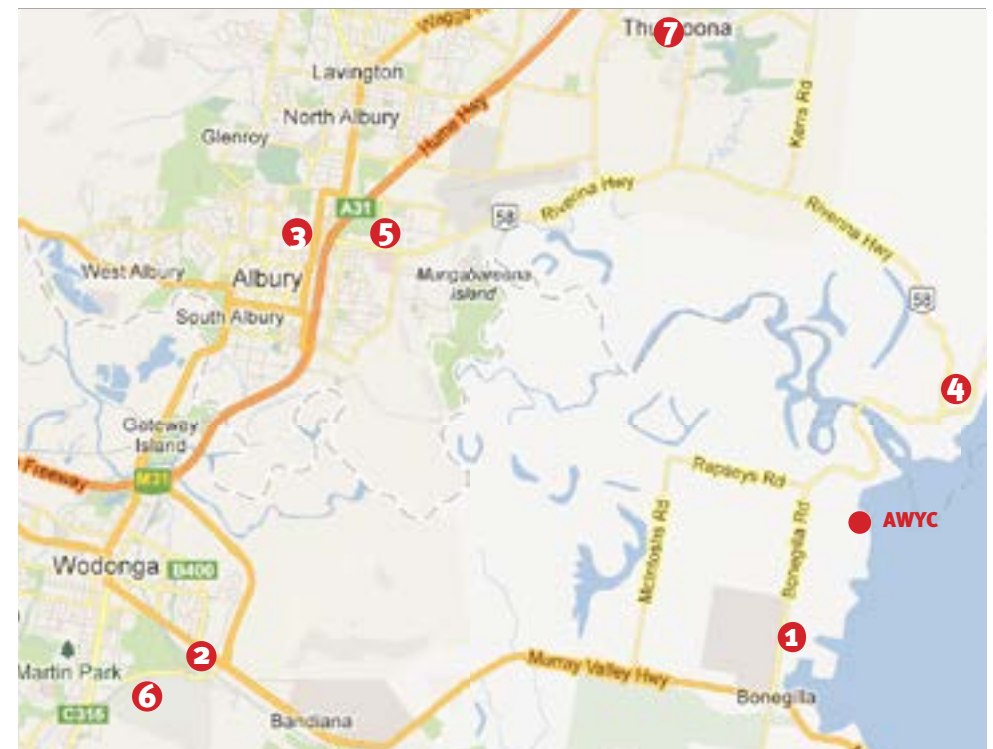
- 1 Kangaroo Point Store
Bonegilla Road, Ebden
- 2 CALTEX Wodonga Riverina
89 Thomas Mitchell Dr, Wodonga
- 3 Shell Service Station
Cnr David St & Guinea St, Albury

Convenience Stores

- 1 Kangaroo Point Store
Bonegilla Road, Ebden
- 4 Lake Hume Tourist Park
37 Murray St, Lake Hume Village

Groceries

- 5 IGA Albury
184 Borella Rd, Albury
- 6 Woolworths
Cnr Victoria Cross Parade & Kelliher Avenue Wodonga
- 7 Woolworths
10 Shuter Ave, Thurgoona



Things to do (Other than enjoying our Club)

Bonegilla Migrant Experience

Seven days a week 10am - 4pm
www.bonegilla.org.au

Bandiana Army Museum

Monday to Saturday 9.30am to 4.30pm
www.army.gov.au/Our-history/Army-Museum-Network/Corps-Museums

Albury Library Museum

Seven Days
www.alburycity.nsw.gov.au/leisure-and-culture/libraries-and-museum/librarymuseum

ArtSpace Wodonga

Monday - Saturday
www.wodonga.vic.gov.au/leisure-arts-visitors/arts-culture/arts-space.asp

Forest Air Helicopters (Scenic Tours)

Seven Days a week
www.forestair.com.au

Chelbec Tours & Charter

(Winery Tours, Historic Town Tours)
www.chelbec.com

Wodonga Ten Pin Bowling

Seven days a week 9am - 9pm
www.wodongatenpin.com.au

Albury Climbing Centre

(Indoor Rock Climbing)
15 Hudson Cres
Tuesday - Sunday
www.facebook.com/AlburyClimbingCentre

Zone Laser Tag

Tuesday - Sunday
www.zonelasertagalbury.com.au

Rev Heads Slot Cars

1st Floor 486 Dean Street Albury
Thurs - Sunday
www.revheadslotcars.com.au

Regent Cinemas

www.regentcinemas.com.au

Intensity Game Centre

www.regentcinemas.com.au/Page/Intensity

Wonga Wetlands

Monday - Friday 8:30am - 4:30pm
www.alburycity.nsw.gov.au/leisure-and-culture/wonga-wetlands

Canoe The Murray (Hire & Tours)

Seven Days 8am - 6pm
www.canoethemurray.com.au

Lake Hume Hire (Fishing Tours)

(Standup Paddle Boards, Kayaks, Bikes)
Seven Days
www.lakehumehire.com

Looking for something different? - Download the Albury Wodonga Official Visitors Guide at
www.wodonga.vic.gov.au/leisure-arts-visitors/visitor-services/images/OVG_2014_small.pdf

Useful Information

EMERGENCY

Police, Fire, Ambulance 000
Poison Help Line 131 126

Albury Police Station

539-543 Olive Street Albury
02 6023 9299

Wodonga Police Station

100 Hovell Street Wodonga
02 6049 2600

HOSPITALS

Albury Hospital (A&E Dept)

East Street Albury
02 6058 4444

Wodonga Hospital

Cnr Wilson & Vermont Sts Wodonga
02 6051 7111

AFTER HOURS CLINIC

Albury Hospital, East St, East Albury
02 6021 0188

WEEKEND DENTAL CLINIC

Emergency Dental Clinic – mobile service for Albury and Wodonga
0456 249 818
9am – 6pm weekends

DOCTORS (BULK BILLED)

Tristar Medical Centre
1136 Pemberton St, Albury
02 6021 4000

Elmwood Medical Centre

291 Beechworth Rd, Wodonga
02 6056 2011

Gateway Community Health, GP Superclinic

155 High St, Wodonga
02 6022 8888

PHARMACIES

Chemist Warehouse

Olive Street, Albury
Mon-Fri 9am - 9pm
Saturday 9am - 5pm
Sunday 10am - 5pm

Guardian Pharmacy

178 High Street, Wodonga
(Next to Coles)
Mon-Sun 9am - 9pm

TAXI SERVICES

Albury 02 6025 2255
Wodonga 02 6024 3444

VISITOR INFORMATION CENTRES

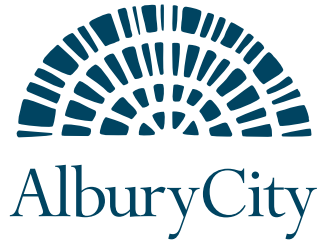
Albury

Cnr Smollett & Young Sts, Albury
1300 ALBURY (1300 252 879)

Wodonga

69-73 Hovell St, Wodonga
1300 796 222

Event Supporters and Sponsors



02 6058 0900



STANTON & KILLEEN
WINEMAKERS SINCE 1875

GRAPHIPRESS
THINK PRINT



Pics taken 31/8/2014

